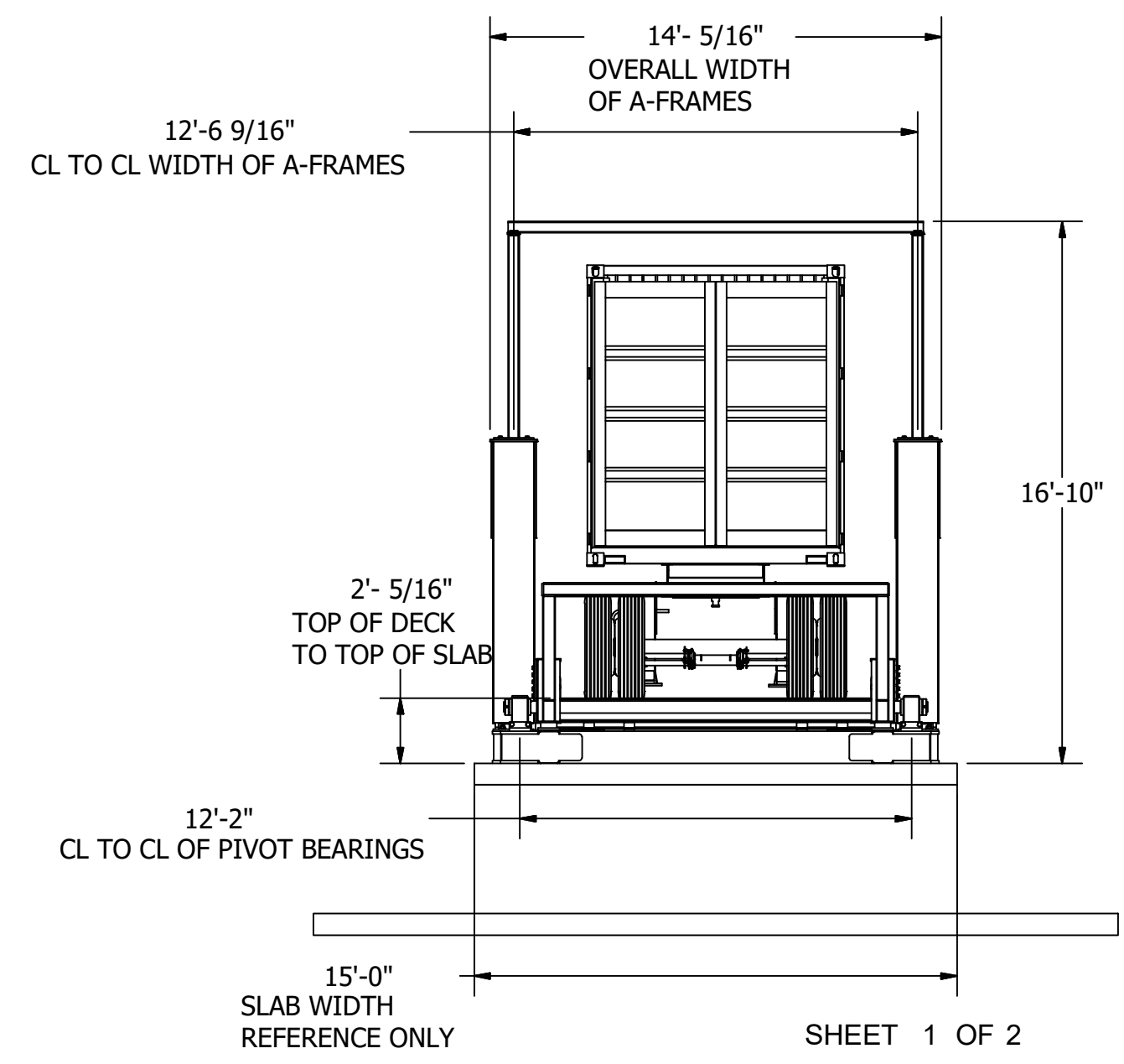
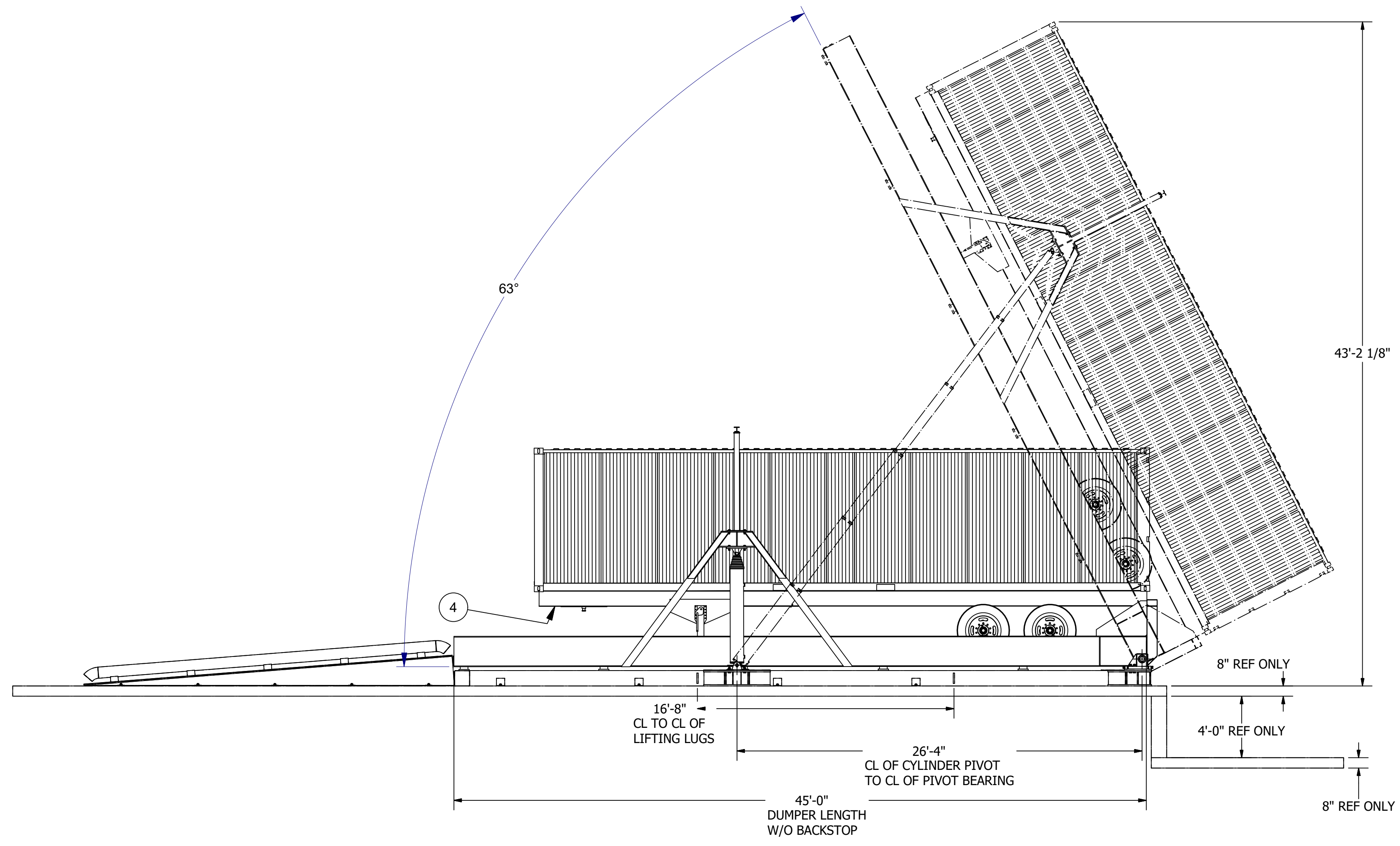
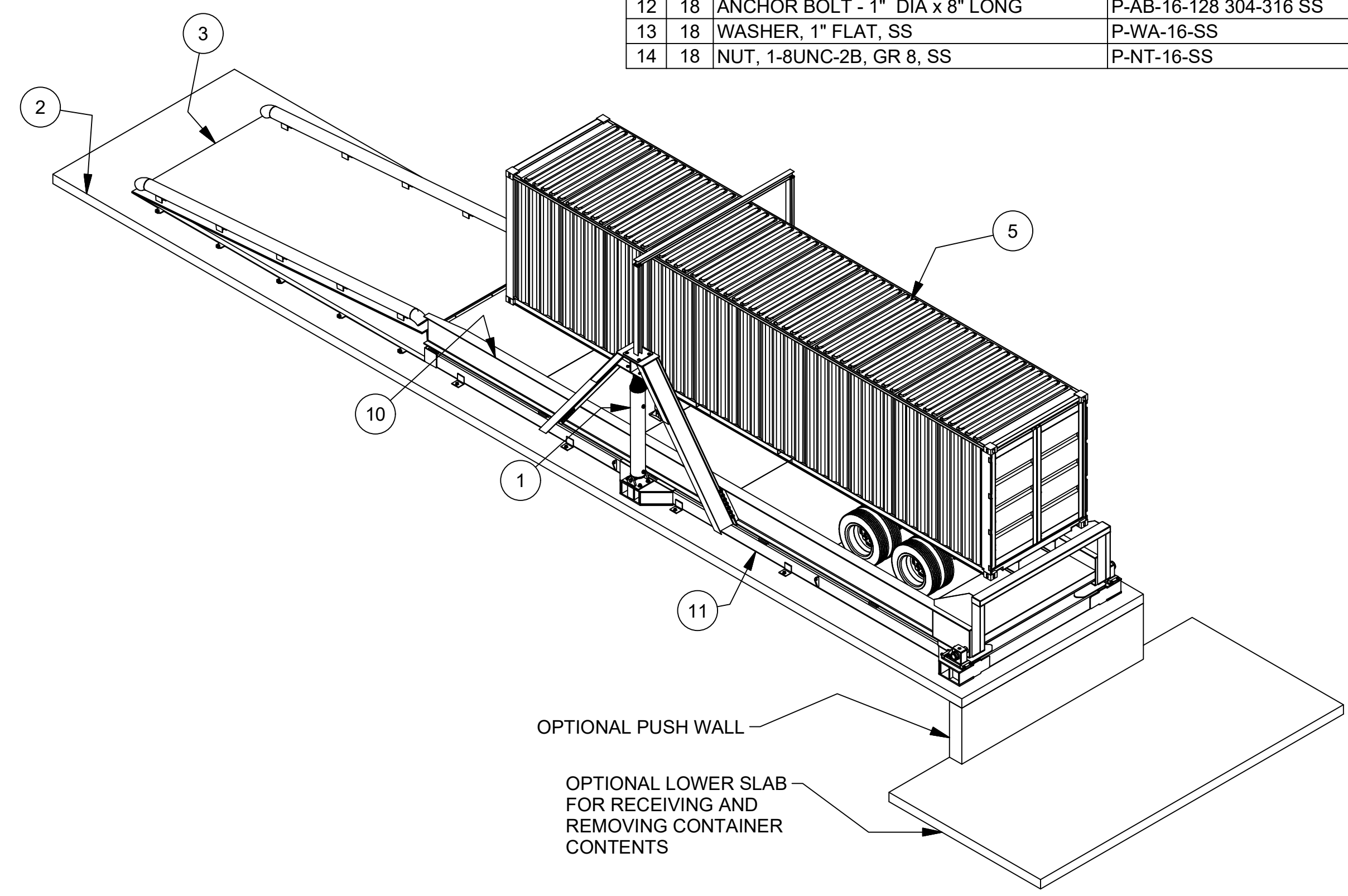
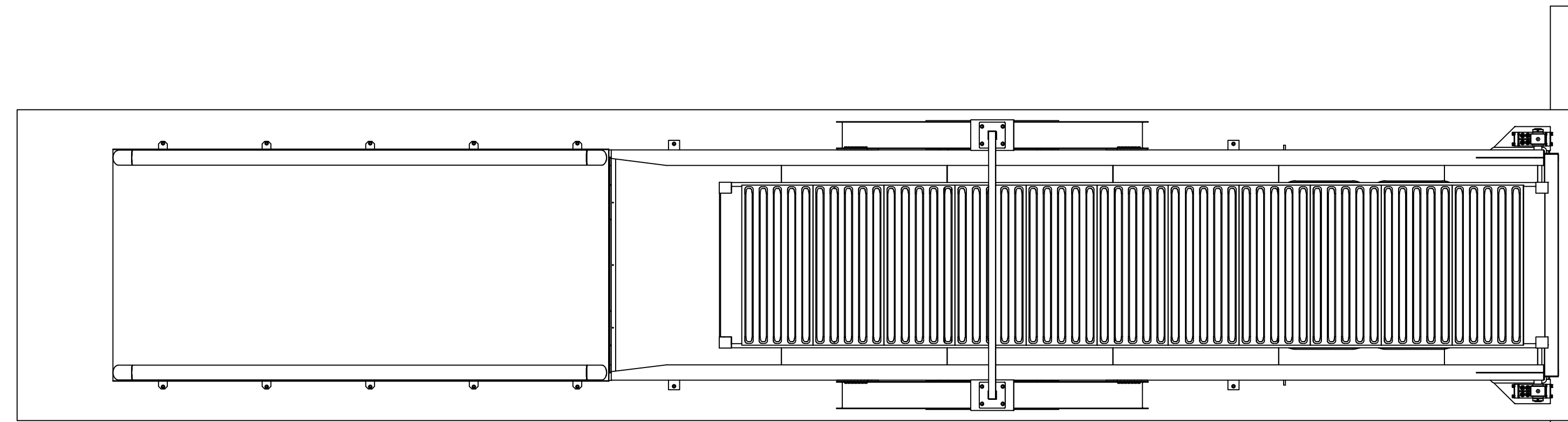


IT.	QTY	DESCRIPTION	PART NO.
1	2	HYDRAULIC CYLINDER	95-4461-320
2	1	FOUNDATION, SLAB	D45-LP-SF-20-7000-000
3	1	RAMP, 25 FT STANDARD APPROACH	RA-24-20-1000-000
4	1	TRAILER, STD 53' CONTAINER CHASSIS	REFERENCE ONLY
5	1	40FT SHIPPING CONTAINER	REFERENCE ONLY
6	2	WELDMNT, BEARING ADJUSTOR	SP - BA - TYPE A - 000
7	2	WELDMNT, CYLINDER PIVOT - LOWER	SP - LM -TYPE A - 000
8	2	WELDMNT, PIVOT BEARING	SP - PB - TYPE A - 000
9	1	PIVOT SHAFT	SP - PS - TYPE A - 000
10	1	45ft LOW PROFILE BRIDGE	STD-D45-LP-18-6000-000
11	1	FRAME, 34 FT SUPPORT	STD-SUB FR-45-000
12	18	ANCHOR BOLT - 1" DIA x 8" LONG	P-AB-16-128 304-316 SS
13	18	WASHER, 1" FLAT, SS	P-WA-16-SS
14	18	NUT, 1-8UNC-2B, GR 8, SS	P-NT-16-SS



SHEET 1 OF 2

**ACTIVE**

**AMERICAN INTERNATIONAL, LLC**

45 FT CONTAINER DUMPER, 63 DEG TILT, SUBFRAME

GENERAL INFORMATION & SPECIFICATION		TOLERANCING & PROJECTION INFORMATION		PART IDENTIFICATION INFORMATION		THIS DRAWING MUST NOT BE USED UNTIL APPROVED FOR CONSTRUCTION. THIS DRAWING IS THE EXCLUSIVE PROPERTY OF AMERICAN INTERNATIONAL LLC (AI). ITS ACCEPTANCE CONSTITUTES AN AGREEMENT THAT IT SHALL BE TREATED AS A STRICTLY CONFIDENTIAL DOCUMENT AND IS TO BE RETURNED UPON REQUEST, AND IS NOT TO BE COMMUNICATED, DISCLOSED, OR COPIED EXCEPT AS EXPRESSLY AUTHORIZED IN WRITING BY AI. © 2016	
1. ALL DIMENSIONS GIVEN IN INCHES. <b>DO NOT SCALE DRAWING</b> 2. REMOVE ALL UNNECESSARY BURRS & SHARP EDGES. 3. UNLESS NOTED OTHERWISE, ALL WELDS USE ROD E7018 L.H. OR EQUIV. ALL WELDS TO BE VISUALLY INSPECTED AS PER A.W.S. SECTION 8.6. D14.1-97. ALL WELDS AND EDGE PREPARATION SHALL CONFORM TO THE A.W.S. SECTION 8.6 D14.1-97 AS WELL.		1. DIMENSIONAL TOLERANCES, UNLESS OTHERWISE NOTED: FRACTIONS: ± 1/16 DECIMAL: XX ± 0.03 XXX ± 0.005 ANGLES: ± 2° 2. THIRD ANGLE PROJECTION		1. PART IDENTIFICATION REQUIREMENT <input type="checkbox"/> ETCH <input type="checkbox"/> PAINT MARKER <input type="checkbox"/> LABEL <input type="checkbox"/> TAG <input type="checkbox"/> METAL STAMP <input type="checkbox"/> OTHER, SEE NOTE ON DRAWING 2. SURFACE PREPARATION & COATING <input type="checkbox"/> NONE <input type="checkbox"/> FINISH COAT, SEE NOTE ON DRAWING <input type="checkbox"/> THREADED & MACHINED SURFACES TO BE FREE FROM PAINT/PRIMER.		DRAWN BY: <b>RAL</b> DATE: <b>7/27/2020</b> APPROVED BY:                   DATE: PART NO: <b>D45-LP-SF-20-1000-000</b> REV: <b>0</b>	



**CONCRETE SLAB**

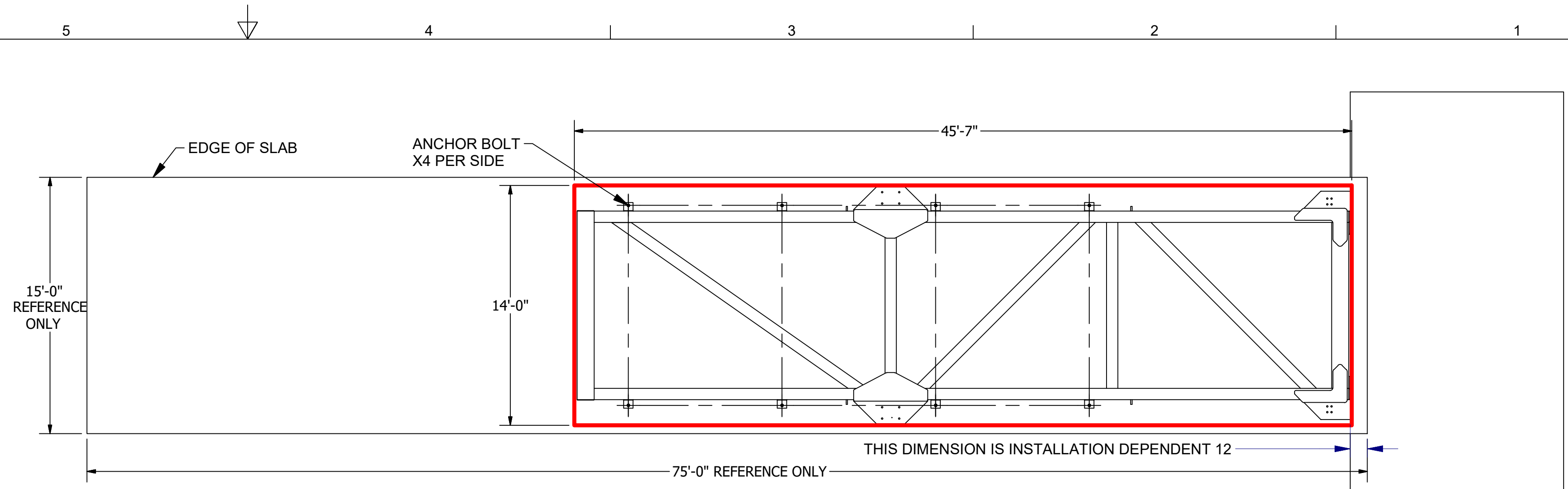
1. CUSTOMER IS RESPONSIBLE FOR THE SUBGRADE AND CONCRETE SLAB.
2. THE SLAB DIMENSIONS SHOWN IN THESE DRAWINGS ARE FOR REFERENCE ONLY. THE ACTUAL DIMENSIONS WILL DEPEND ON SITE AND USER REQUIREMENTS.
3. THE SLAB MAY BE EITHER REINFORCED WITH STEEL REBAR OR FIBER REINFORCEMENT PROVIDED THE INSTALLATION MEETS APPLICABLE CODES AND STANDARDS AND IS SUITABLE FOR THE LOADS TO BE ENCOUNTERED. OPERATING LOADS ARE AVAILABLE UPON REQUEST.

**INSTALLATION INSTRUCTIONS**

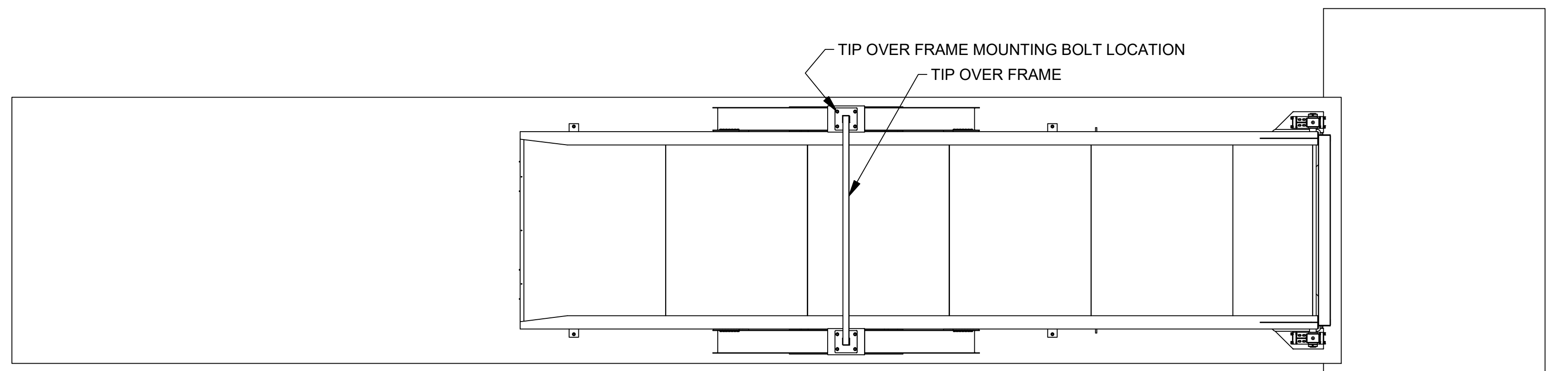
1. MARK OUT AN AREA ON THE SLAB SIMILAR TO THE ONE SHOWN IN VIEW A, USING THE FOOTPRINT DIMENSIONS SHOWN IN VIEW A. ENSURE NO LARGE DIVOTS OR CRACKS ARE PRESENT IN THE AREA AS THE SUBFRAME MUST REST ON RELATIVELY SMOOTH, LEVEL SURFACE.
2. INSTALL THE DUMPER ASSEMBLY ONTO THE CONCRETE SLAB USING THE (4) LIFTING LUGS. ONCE THE DUMPER IS PROPERLY POSITIONED, INSTALL THE THE 1"Ø ANCHOR BOLTS.
3. INSTALL THE TIP OVER FRAME USING THE SUPPLIED BOLTS AND MOUNTING HOLES ON TOP OF THE A-FRAMES. (VIEW B)
4. INSTALL ALL HYDRAULIC HOSES/LINES AND CONNECT THE HYDRAULIC POWER UNIT.
5. RAISE AND LOWER THE DUMPER TO ENSURE SMOOTH OPERATION. ADJUST AS NEEDED.
6. PLACE THE RAMP ONTO THE SLAB AND POSITION IT SUCH THAT IT IS ON THE CENTERLINE OF THE DUMPER AND BUTTS UP AS CLOSELY AS POSSIBLE TO THE DUMPER WITHOUT TOUCHING IT. (VIEW C)
7. INSTALL ALL OF THE ANCHOR BOLTS (SEE ANCHOR BOLT NOTE) TO FULLY ATTACH THE RAMP TO THE SLAB. (VIEW C)

**ANCHOR BOLT NOTES:**

- ANCHOR BOLTS & EPOXY RESIN TO BE INSTALLED PER MANUFACTURE'S INSTRUCTIONS.
- ALL ANCHOR BOLTS TO BE HILTI HAS-B-105-HDG OR HAS-R 304/316 IN CONJUNCTION WITH HILTI HIT-RE 500 V3 EPOXY RESIN OR EQUIV.
- ALL ANCHOR BOLTS TO HAVE A MINIMUM EMBEDMENT DEPTH OF 6 INCHES.
- ALL ANCHOR BOLT NUTS TO BE TORQUED IN ACCORDANCE WITH MANUFACTURER'S SPECIFICATIONS
- ANCHOR BOLT DIMENSIONS ARE FOR REFERENCE ONLY. ALL ANCHOR BOLT EPOXY HOLES TO BE DRILLED AFTER DUMPER AND RAMP HAVE BEEN LOCATED ON FOUNDATION TO ENSURE PROPER PLACEMENT OF HOLES.

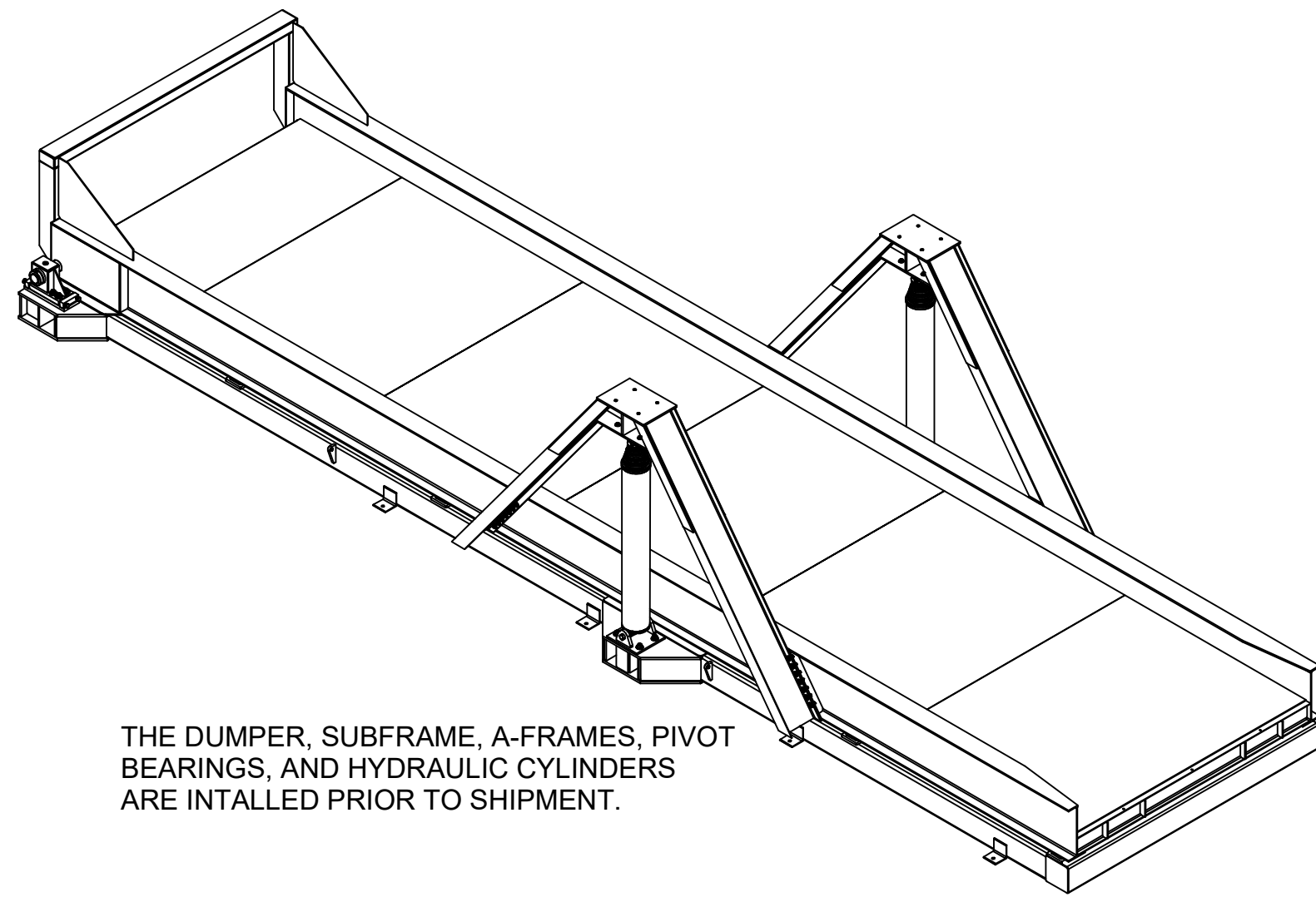


**VIEW A (DUMPER NOT SHOWN FOR CLARITY)**

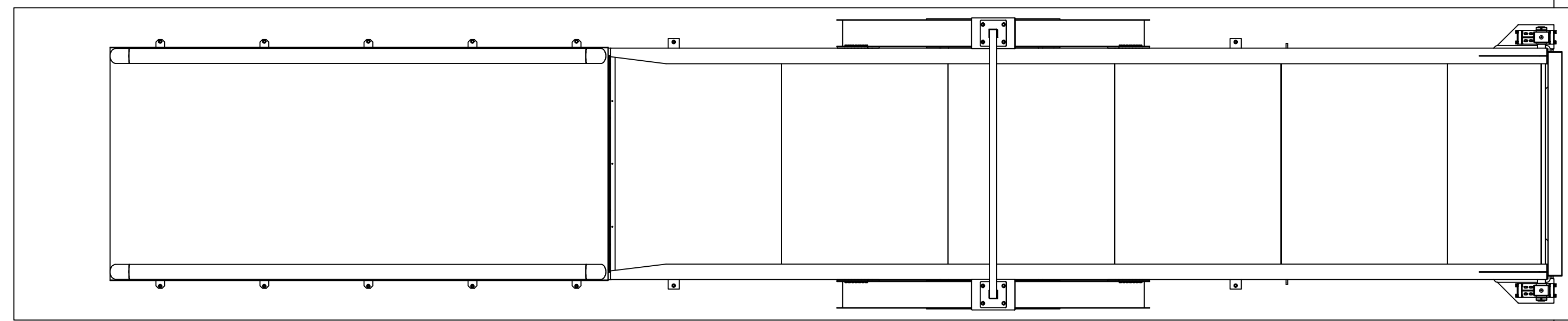


**VIEW B (DUMPER INSTALLED)**

**DUMPER AS SHIPPED**



THE DUMPER, SUBFRAME, A-FRAMES, PIVOT BEARINGS, AND HYDRAULIC CYLINDERS ARE INTALLED PRIOR TO SHIPMENT.



**VIEW C (RAMP INSTALLED)**

SHEET 2 OF 2

ACTIVE

**AMERICAN INTERNATIONAL, LLC**

45 FT CONTAINER DUMPER, 63 DEG TILT, SUBFRAME

<b>GENERAL INFORMATION &amp; SPECIFICATION</b> 1. ALL DIMENSIONS GIVEN IN INCHES. <b>DO NOT SCALE DRAWING</b> 2. REMOVE ALL UNNECESSARY BURRS & SHARP EDGES. 3. UNLESS NOTED OTHERWISE: ALL WELDS USE ROD E7018 L.H. OR EQUIV. ALL WELDS TO BE VISUALLY INSPECTED AS PER A.W.S SECTION 8.6. D14.1-97. ALL WELDS AND EDGE PREPARATION SHALL CONFORM TO THE A.W.S SECTION 8.6 D14.1-97 AS WELL.		<b>TOLERANCING &amp; PROJECTION INFORMATION</b> 1. DIMENSIONAL TOLERANCES, UNLESS OTHERWISE NOTED: FRACTIONS: ± 1/16 DECIMAL: XX ± 0.03 XXX ± 0.005 ANGLES: ± 2° 2. THIRD ANGLE PROJECTION		<b>PART IDENTIFICATION INFORMATION</b> 1. PART IDENTIFICATION REQUIREMENT <input type="checkbox"/> ETCH <input type="checkbox"/> PAINT MARKER <input type="checkbox"/> LABEL <input type="checkbox"/> TAG <input type="checkbox"/> METAL STAMP <input type="checkbox"/> OTHER, SEE NOTE ON DRAWING 2. SURFACE PREPARATION & COATING <input type="checkbox"/> NONE <input type="checkbox"/> FINISH COAT, SEE NOTE ON DRAWING <input type="checkbox"/> THREADED & MACHINED SURFACES TO BE FREE FROM PAINT/PRIMER.		THIS DRAWING MUST NOT BE USED UNTIL APPROVED FOR CONSTRUCTION. THIS DRAWING IS THE EXCLUSIVE PROPERTY OF AMERICAN INTERNATIONAL LLC (AI). ITS ACCEPTANCE CONSTITUTES AN AGREEMENT THAT IT SHALL BE TREATED AS A STRICTLY CONFIDENTIAL DOCUMENT AND IS TO BE RETURNED UPON REQUEST, AND IS NOT TO BE COMMUNICATED, DISCLOSED, OR COPIED EXCEPT AS EXPRESSLY AUTHORIZED IN WRITING BY AI. © 2016	
DRAWN BY: <b>RAL</b> APPROVED BY:		DATE: <b>7/27/2020</b> DATE:		PART NO: <b>D45-LP-SF-20-1000-000</b> REV: <b>0</b>			